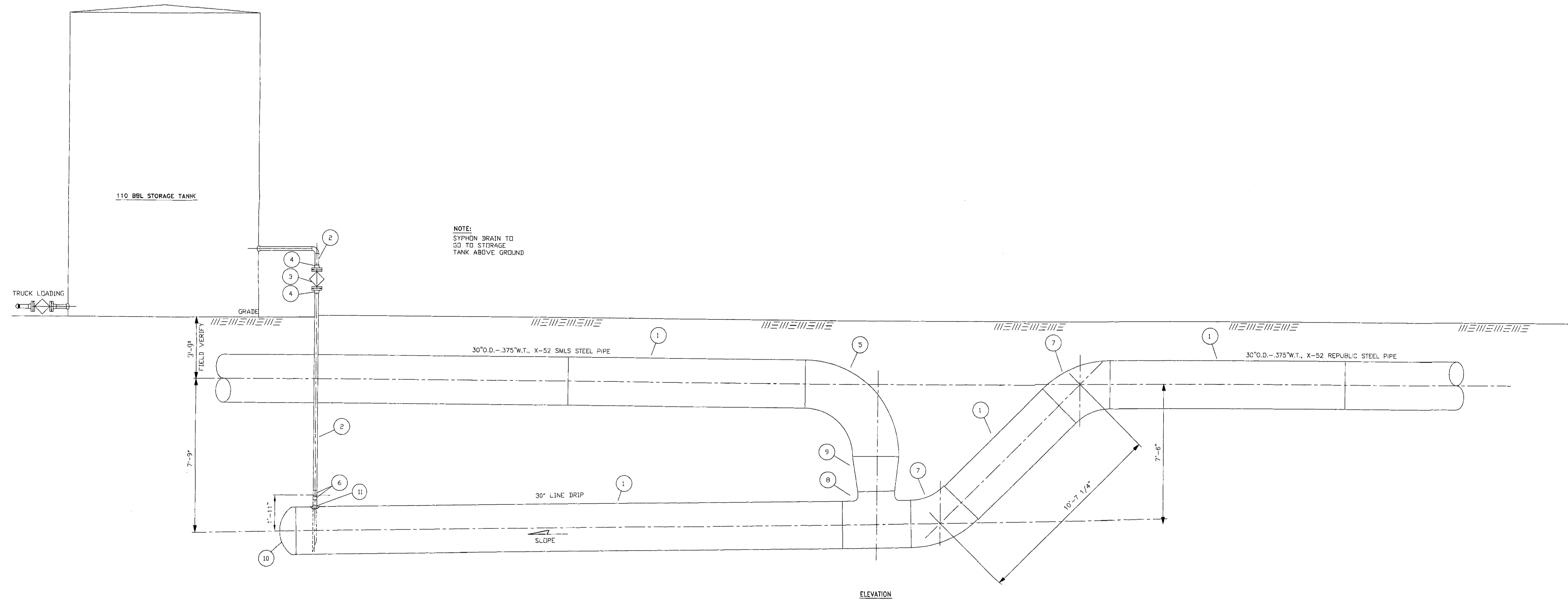


A  
↑  
THIS DWG.

PLAN

A  
↑  
THIS DWG.



ELEVATION

11	2" x 30" WELD SADDLE .500" W.T. MIN.
10	30" WELD CAP, Y-52, T.W.T. .375" W.T.
9	30" x 24" CONC. REDUCER, Y-52, T.W.T. .375" W.T.
8	30" x 30" x 24" REDUCING TEE, Y-52, T.W.T. .375" W.T.
7	30" - 45" ELL, Y-52, T.W.T. .375" W.T.
6	2" - 90° ELL, GR. "B", T.W.T. .218" W.T.
5	30" - 90° ELL, Y-52, T.W.T. .375" W.T.
4	2" - 600# R.F.W.N. FLANGE BORE: 2.067"
3	2" - 600# ROCKWELL #2245 LUBE PLUG VALVE, R.F.
2	2 3/8" O.D. - .218" W.T., GR. "B", SMLS. STEEL PIPE
1	30" O.D. - .375" W.T., X-52 REPUBLIC STEEL PIPE

LEGEND

DWG. NO.

REFERENCE DRAWINGS

NO.	DATE	BY	DESCRIPTION	W.O.	APP.	PRT.	SEP.	DATE	TO	W.O.
1	8/20/01	EPG	ADDED 110 BBL STORAGE TANK	032758						

M.P.52+1980.9

ENG. RECORD	DATE
DESIGN	GPF 8/31/00
DRAFTING	GF 8/31/00
CHECKED	
PROJECT APPROVAL	
SURVEY DATE	
R/W NUMBER	
COMPUTER FILE NAME	01103-52+1980



**30" CALIFORNIA "B" LINE (1103)**  
LINE DRIP AT PECOS RIVER (4109)  
TWS. 26-S, RANGE 29-E, EDDY COUNTY, NEW MEXICO  
PLAN AND ELEVATION

SCALE: 3/8"=1'-0"

DWG. NO. 1103-52+1980

REV. 1